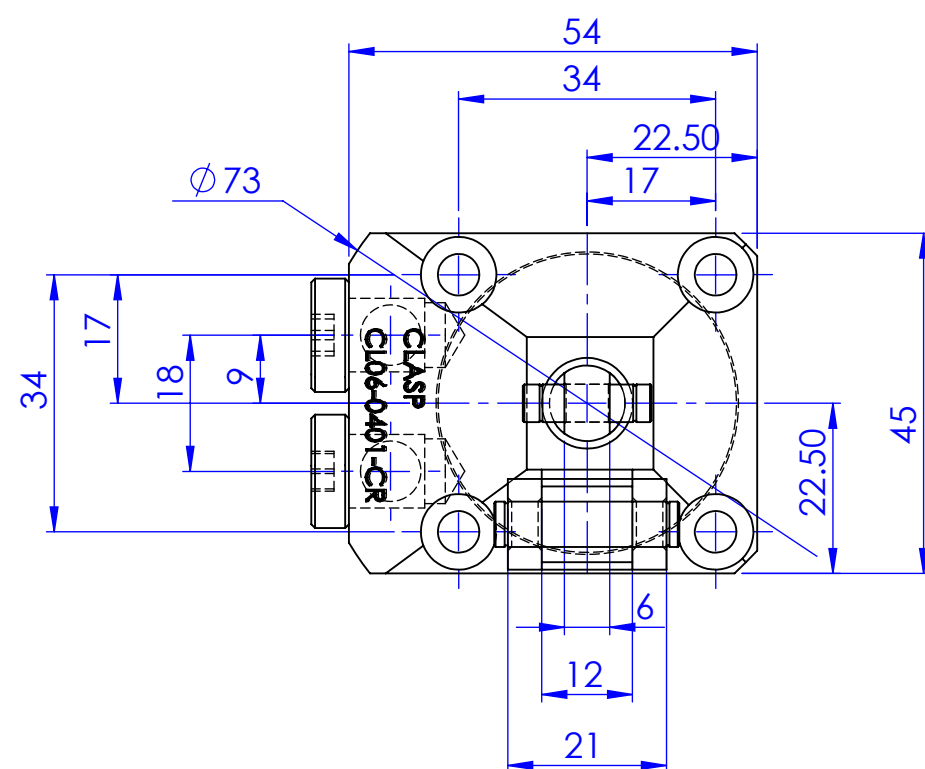




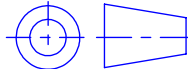


CL06-0401-CR
Bore dia - 25mm
Piston dia - 12mm
Full stroke -20mm
Locking stroke - 17mm
Lock cyl.area - 4.9cmsq



Surface Finish															ZONE		SCALE	1:1			
Ra Value μm	0.025	0.05	0.1	0.2	0.4	0.8	1.6	3.2	5.2	12.5	25	50	100			MATERILAS					
Ra Symbol	N1	N3	N2	N4	N5	N6	N7	N8	N9	N10	N11	N12					GROUP No:—	WEIGHT			
																	LINK	1.15KG			
			DESCRIPTION														Qty.		Casting/forging/ welding drg.no		
Drawn	Prabhakar		DESCRIPTION																		
Checked	Prabhakar		CL06-0401-CR																		
Approved	19/09/21																				
Date	19/09/21																Drawing NO				
Clamping elements type			CLASP BANGALORE-72														SHEET: 1 of 1				
																			Sheet No: 1/1		